



Parkallen News



Parkallen's Senior's Dinner.

In this issue...

- Parking Update
- Requirements for Tree Protection
- Website Launch
- Peli Manor Update

Turkey Dinner Was Served and It Was Delicious

On December 9, the we hosted another wonderful Parkallen Community League Seniors' Dinner! To help launch the holidays, we had a Christmas turkey dinner! Huge thanks to Allison Chevrette for organizing and to her many helpers: Christine, Sonya, Leanne, Ed,

Ruby, Kevin, Naomi, Hazel, Clarissa, Janaya, Erin, Brian, Rowan, Griffin, and to Hedy for the photos.

Our next *Dinner is Served* event happens on February 24th. Don't miss it! Look for your invitation and watch Facebook for details.

How do you get on the invite list? We send invitations to all community league members who identified as seniors, and to all seniors we know in the community. If we missed you, let us know.

Email social@parkallen.ca



Update: Getting the Parking out of Parkallen

By Niall Mckenna



In the last newsletter, we told you about a petition to ease chronic parking congestion in our neighbourhood — primarily on 112A St, which has become a parking lot for the nearby LRT. The response has been positive and passionate, with several residents offering both their signatures and support to collect more. Of the 154 households on 112A St and the connecting side streets of 62 Ave and 70 Ave (up to 111 St and 112 St, respectively), 67 households have signed their support. We still need 36 households to reach the two-thirds support required by the City of Edmonton. Collecting signatures is time-consuming, so the process continues.

Along with the support, we've also heard concern that drivers will simply park on adjacent

streets, especially 112 St around Parkallen School and 71 Ave. How far do the restrictions need to go? The city has provided no clear guidance on this question. The consensus among the small group of people I have spoken to is that the entire western half of Parkallen (west of 111 Street) likely requires parking restrictions. This would require that more than 200 additional single family homes be approached, including apartments and condos.

Does this go far enough? Or should parking restrictions be placed on our entire neighbourhood?

Whatever the answer, we need help to collect signatures and inform residents about the problem. Even though your street is clear today, it could become a parking lot if restrictions are not

placed on a large enough area.

This is what you can do today:

If you live on 112A St, 62 Ave (between 112A St and 112 St), 67 Ave (between 113 St and 112A St) or 70 Ave (between 112A St and 111 St) and have not signed the petition:

Download the petition at tinyurl.com/parkallenpetition

Sign, get your neighbours to sign, and deposit completed forms in the mailbox of the Parkallen Community Hall in an envelope marked "Parking Petition"

Email niall@niall.ca to let me know who has signed so we don't approach houses again.

If you live west of 111 St, we need one or more people to be responsible for collecting signatures and help with the paperwork. Call me at 587-596-5494 to get started.

Visit the Parkallen Facebook page (facebook.com/ParkallenCommunity) or email civics@parkallen.ca to tell us whether you think parking restrictions are required east of 111 St, and if you are ready to roll up your sleeves and help make that happen.

Let's get the parking out of Parkallen!

Want to get the Parkallen News faster?

Sign up to get the newsletter and other important information by email at: www.parkallen.ca (sign up form is in the menu on the right). Don't forget to like us on Facebook (@ParkallenCommunity) and follow us on Twitter (@parkallenCL) and Instagram (ParkallenYeg) for more frequent updates.

City of Edmonton's Residential Parking Program

The availability of on-street parking is, increasingly, an issue for Parkallen residents. As you've read in Niall MacKenna's article, there is a petition circulating that asks for parking restrictions in some areas of our neighbourhood. These restrictions will be determined by the City's residential parking program.

Proposed Parking Restrictions

Maximum 2-hour parking

08:00 - 18:00

Monday - Friday

Except for residents with a valid permit, issued by the City of Edmonton

Implementation of this program will require:

Installation of signs with parking restrictions (see picture)

Residents can apply for permits:

Annual Resident Parking Permits
- apply for a permit annually (vehicles registration and proof of residence required)

Visitor Parking Permits - 2 visitor

passes allowed per address per year. These allow individuals who are visiting to park close to the residence.

Temporary Parking Permits
- temporary parking for renovations, out of town guests, seniors, people with disabilities or one-time social events

Please Note: limitations and restrictions apply to each of these permits

Community Approach

In order to successfully implement this program in our neighbourhood, it is likely that the parking area restriction will need to be expanded to prevent the parking issue from moving further into the neighbourhood. So stay tuned for more information!

For more information on the Residential Parking Program please visit www.edmonton.ca.

Main Street Overlay:
<http://bit.ly/2kstdUn>

109 Street ARP:
<http://bit.ly/2jTzh93>



Parking Restriction Option 1



Parking Restriction Option 2

Upcoming Parkallen Events

The Parkallen social committee has been hard at work planning a number of fantastic events! More details will be announced as the dates approach.

Please visit www.parkallen.ca or email social@parkallen.ca to learn more.

Movie Night!

January 13, 6 p.m. - Under 13
8 p.m. - 13 and over

Dinner is Served Seniors' Dinner

February 24, 1 p.m - 4 p.m.

Parkallen Knitters

Wednesdays at 1 p.m.

Parkallen Playgroup

Tuesdays at 8:45 a.m. to 11 a.m.

New Requirements for City Tree Protection

By Jan Hardstaff



Boulevard trees are a valuable City asset. They provide a desirable aesthetic and character, as well as to many other benefits to mature neighborhoods like Parkallen.

Ecological benefits that trees provide include: storm water absorption and filtration, carbon sequestration, improvement to air quality, temperature moderation, and reduction of energy by shading homes in summer and sheltering them in winter. A mature elm may contribute approximately \$317 in annual benefits and total savings from Parkallen's boulevard trees amounts to \$305,800.

City owned trees are found in public park spaces, roadway islands, and the boulevard between the street and sidewalk. However, where sidewalks are adjacent to the street they may be located between the sidewalk and the property line. Call 311 if you are unsure a tree is located on City or private property. It is important to identify and protect City owned trees before beginning a construction project.

If a public tree is damaged or removed during construction, the developer is responsible for cost of removal and the asset value of the tree.

The City of Edmonton introduced new Tree Protection Guidelines in summer of 2017.

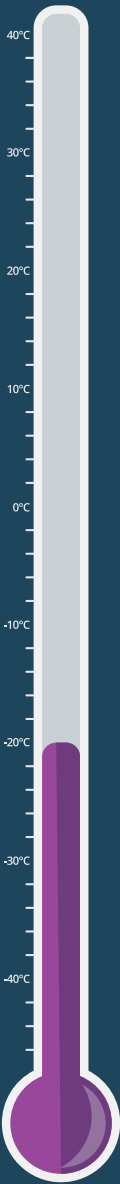
The Tree Protection brochure: (https://www.edmonton.ca/residential_neighbourhoods/TreeProtectionBrochure2017.pdf) outlines new requirements for public tree protection within 5 m of a construction site. This is important because significant stress factors can impact trees during construction. Excavation damages roots, machinery may damage the trunk or branches, soil compaction or changes in grade reduce the ability of roots to access air and water and changes. Trees exposed to these stress factors are at greater risk of succumbing to disease and pest infestation. They are also less resilient to drought, prolonged wet weather, extreme cold during the winter and their stability may be compromised creating additional risks to public safety.

If you have construction occurring near you, it is important that new guidelines are properly followed. A "tree protection zone" is now required, which restricts access to storage or disposal of construction material within it. You can find specifics here: (see www.edmonton.ca/treeprotection)

If access cannot be provided by a driveway or rear lane, anti-compaction measures must be provided to create temporary access to the site. These are known as anti-compaction measures. These measures should not be in place longer than six months to prevent suffocation of the tree roots. In addition to the temporary access protection now required, a Temporary Construction Access Authorization Permit (TCAAP) is required when equipment will be crossing a boulevard or sidewalk to temporarily access private property from the public road right of way. An On-Site Construction and Maintenance Permit (OSCAM) may also be required for any work on City road right of ways. For permit applications: <https://www.edmonton.ca/>

If you know of construction that is not following the guidelines and putting public trees at risk, call 311 or email 311@edmonton.ca.

If City Trees have piqued your interest, check out The Value of Trees article in the May, 2016 issue of Parkallen News: www.parkallen.ca/newsletter/



When Temperatures Drop...

Winter can be a dangerous time with increased risk of frostbite and hypothermia – especially for people experiencing homelessness.

Edmontonians need to work together to assist those at risk.

WHO DO YOU CALL?

311
City of Edmonton Services:
For any concerns city wide
about homelessness on
public land

211 Press 3
24/7 Crisis Diversion:
Non-emergency support
for people in distress
(mental health, shelter
and intoxication)

780 860 6146
Boyle Street Community
Services Street Outreach:
Connects with those living
rough outside

911
For someone in serious
distress or in cases of
emergency

HOW CAN YOU HELP?

- Read the Winter Emergency Response Guide at homewardtrust.ca to learn more about these agencies that help our city's most vulnerable citizens.
- Advocate for more affordable and accessible housing.
- Donate new or gently used clothing to social agencies that provide food, warming spaces and supports for people in need.

WHERE CAN YOU FIND MORE INFORMATION?

- edmonton.ca/homelessness
- boylestreet.org
- edmonton.ca/311
- ab.211.ca
- reachedmonton.ca
- fcm.ca/housingcrunch
- linkyeg.ca



Parkallen Yoga

Yoga classes are the Thursdays at 7 pm!

Parkallen Community Hall

6510 111 Street

Drop in \$15/class or

Parkallen Recreation Punch Card

10 classes for \$120

Contact recreation@parkallen.ca

Main Street Overlay and the 109 Street ARP

The City of Edmonton recently adopted a Main Street Overlay that replaced the Pedestrian Commercial Shopping Street Overlay. Parkallen was not previously included in the Pedestrian Commercial Shopping Street Overlay but the new Main Street Overlay is applied between 72 and 70 Avenue on 109 Street as well as the 111 Street Commercial Strip in the heart of Parkallen.

The previous overlay ensured development would create pedestrian-friendly commercial streets and encourage higher quality development. Unfortunately, the Main Street Overlay does not include some of the important protections included in the 109 St Area

Redevelopment Plan. Here is a brief summary of the issues:

Potential for larger bars and nightclubs (200+ through variances) in the 109th Street corridor

The reduction of mitigation measures to ensure an appropriate transition between new 4-5 storey commercial/ mixed-use buildings and adjacent low scale housing.

Increased parking requirements and elimination of parking incentives for low impact businesses

The granting of bonuses for commercial redevelopment that disadvantage mixed use redevelopment

The application of a designation focused solely on Commercial redevelopment to areas currently and planned to be non-Commercial

Deletion of the urban design requirement for high quality, durable, compatible and harmonious exterior materials

As a member of the Central Area Council of Community Leagues (CACCL) Parkallen has met with the City to propose amendments to the Main Street Overlay so that it is more inclusive of the 109 Street ARP.



Looking for a part-time job right here in the neighbourhood?

We are hiring!

Parkallen Elementary School is looking for a Lunch Supervisor Monday through Friday on regular instruction days.

This is a paid position and requires filling out an application and police check.

For further information please phone the Parkallen Elementary School Office at: 780-434-8503 or stop by for an application form and speak to Carla, the school's Administrative Assistant.

6703 – 112 Street • 434-8503 • parkallen@epsb.ca • www.epsb.ca/schools/parkallen

Dinner

IS SERVED

Seniors living in Parkallen are invited to join us for dinner on

February 24, 2018, 1:00 pm
Parkallen Community Hall
6510-111 Street,
Edmonton, AB

Relax, meet your neighbours, and catch up with old friends at this free community event. Please bring along any photos or historical items you would like to share with the Parkallen Community League.

If you have any questions or need a ride to the event please contact Leanne at social@parkallen.ca or 780-504-4074

Peli Manor Update

Following the November 7 open house, the City of Edmonton responded with a *What We Heard* report. You can read the report in its entirety online here: <http://bit.ly/2ACxyj2>

The Parkallen Community League Civics Committee responded to the City on November 29; you can read the full response here: <http://bit.ly/2ADxUFO>

Included in the response the Civics Committee lists things that have improved, concerns, and things that appear to be unacceptable. Please refer to the full documents online for more details.

Things that have improved:

- Commitment to 109th Street boulevard and tree planting
- Handicapped access

- A City commitment to require storm drainage to be managed on site and discharge to the 109th Street catchment
- The City commitment to placing a specific grade into the DC2 document
- Decorative shed roofs were removed.
- Increasing the set back of the west parkade foundation wall to more than 6 inches from the property line
- A firm commitment to inspection of the lane and other City infrastructure before and after construction, with repair to damage assessed to the developer

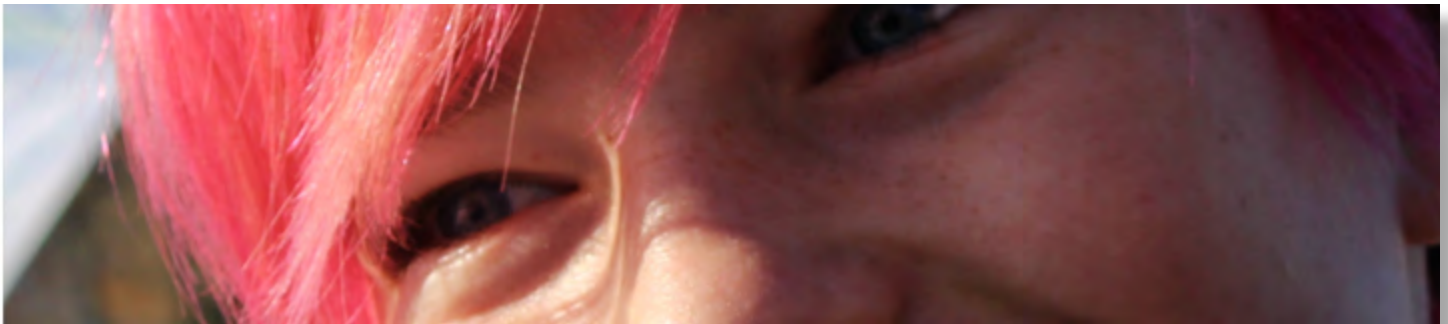
Things that are still a concern:

- Setbacks
- Community Responsibilities
- Landscaping

Things that appear unacceptable in their current form and require clarification:

- Requiring the developer to build the east-west lane to commercial standard
- Lack of transferable commitment to protect the neighbouring property to the west
- Lack of commitment to site controls during construction

Information on this and other Civics activities is updated on our website: parkallen.ca



Why fit in when you were born to stand out?

As usual, Dr. Suess said it best. We agree!

We're pleased to announce the launch of our outstanding new website.

www.parkallen.ca

Tag your Instagram photos #parkallen to see them in our front page feed.
Watch for our feedback survey in the new year.

Tell us what you like best, or report an error: communications@parkallen.ca



Happy Holidays

from Parkallen Community League!



Come Sing with Us!

- Award winning organization
- Professional conductors
- Travel locally, nationally, internationally
- Variety of musical styles

Junior Choirs - Ages 6-12

Boys' & Girls' Choirs - Ages 12-15

Youth Choir - Ages 15-24

Register now for January

Contact us for more information about our choir programs
info@EdmontonYouthChoir.ca
www.EYCC.ab.ca | 780-994-6539



EDMONTON

Youth and Children's Choirs

"Your Home for Choral Excellence"

DRUM LESSONS

WITH DAN SKAKUN

Dan, currently teaching drums for MacEwan University's degree and diploma programs, is offering *private drum lessons*, with over 35 years of experience. Dan also has a studio in Parkallen.

All Levels. All Experiences.

TO BOOK A LESSON PLAN

Phone (780) 436 - 5024

Email dan@skakundrums.ca

Website www.skakundrums.ca



Looking to Volunteer?

We are in need of a **Hall Rental Coordinator** and a **Volunteer Coordinator**. Both positions are an excellent way to meet your neighbours!

Hall rentals are often one of the first contacts people have with the community league and our rental coordinator offers a valuable service to the neighbourhood.

Our Volunteer Coordinator will have the opportunity to meet all of our dedicated volunteers as well as recruit new ones. Do either of these sound like a good fit for you? Email president@parkallen.ca for more info.



Congratulations Julie & Todd!

On December 8, the Edmonton Minor Soccer Association recognized the awesome contributions of Parkallen's own Julie Whitworth and Todd Beschell. Todd and Julie were presented with the Outstanding Volunteer Award for their dedication to coaching youth soccer in Edmonton. We are so very fortunate to have volunteers like them in our community. Thank you both - and congratulations on this richly deserved award.

Want to join us? We have roles large and small for volunteers. Email soccer@parkallen.ca

Green Circle Preschool

Spots opening January 2018

at Parkallen School
6703 – 112 Street
780-435-3129



www.greencirclepreschool.com

Graphics & layout for Parkallen News courtesy of:



780.707.0522 | www.lericksongraphics.com

The UPS Store®

- 3 months FREE MAILBOX RENTAL *w/12month contract
Street address • Private • Secure • 24/7
Moving? No lost mail! • Student Discounts
- WORLDWIDE PACKING and SHIPPING.
- "Let us receive your deliveries!"



8507-112 Street • 780-757-6877

Hockey Rink Schedule

2017-2018

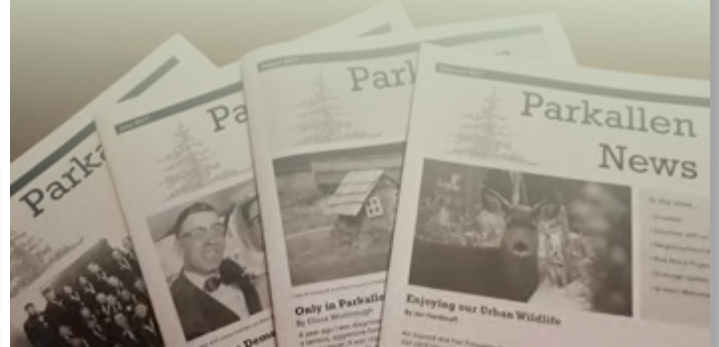
Monday	4-7 pm	Family Hockey
Monday	7-10 pm	Rink Maintenance
Tuesday	4-10 pm	Family Hockey
Tuesday	7-10 pm	Adult Hockey
Wednesday	4-9 pm	Family Hockey
Thursday	4-9 pm	family Hockey
Friday	4-7 pm	Family Hockey
Friday	7-10 pm	Adult Shinny
Saturday	12-4 pm	Family Hockey
Saturday	4-9 pm	Adult Shinny
Sunday	1-4 pm	Family Hockey
Sunday	4-9 pm	Adult Shinny

Rink will be closed when temps rise above 4° C or below - 20° C

Welcome Kathy Carter!

We are pleased to welcome Kathy Carter as our new newsletter distribution coordinator.

Kathy and her husband Bill have been Parkallen residents since 1982. After working for 36 years in the University of Alberta Library, she is now retired and happy to have more time for reading and dog walking. Many thank to Sherry Skagestad and the Skagestad family for managing this important role for the last two years.



Join us at Parkallen Community Hall for

Snowfest

February 11, 2018

1 p.m. to 4 p.m.



Sleigh rides • Family Hockey Game • Free Food & Drinks • Skating • Soccer Registration

We need volunteers! Contact social@parkallen.ca for more information.

Classified

TREES PLEASE? Rebuilding? May I save your deciduous trees and transplant them to my empty yard? Please email shansong@shaw.ca if I can remove your trees before you excavate. Thank you!

Occasional child, pet and house sitter. Completed Babysitting certificate and First Aid. Responsible individual able to look after your home, take in your mail, water your plants or run errands for you in

her own vehicle. References available. Call Kaylyn 780.982.7488.

Calling all knitters—Please join us in the Parkallen Community Hall Wednesday's from 1:00-3:30 for an afternoon of knitting. Everyone welcome. Coffee and snacks included. For more info contact Helena at 780-435-1423 or Beth @ 780-434-2211



Your Parkallen Community League Executive:

President: Leanne Kohn	president@parkallen.ca
Vice President: VACANT	vicepresident@parkallen.ca
Treasurer: Julie Beschell	treasurer@parkallen.ca
Casino: Meghan Dunnigan	casino@parkallen.ca
Membership Coordinator: Shara Wajih	membership@parkallen.ca
Canvas Drive Coordinator: Laurel Miyashita	membership@parkallen.ca
Secretary: Matt Larouche	secretary@parkallen.ca
Parks & Recreation Director: VACANT	park@parkallen.ca
Rink: VACANT	rink@parkallen.ca
Soccer Coordinator: Meghan Dunnigan	soccer@parkallen.ca
Hall Coordinator: VACANT	hall@parkallen.ca
Hall Maintenance: Warren Thomson	maintenance@parkallen.ca
Programs & Social: Leanne Kohn	social@parkallen.ca
Programs & Social: Allison Chevette	social@parkallen.ca
Programs & Social: Jeremiah Basuric	social@parkallen.ca
Community Garden Liason: Sarah Wipperman	gardenrep@parkallen.ca
Communications Director: Anne Pratt	communications@parkallen.ca
Copy Editor: Cassie Muisse	newsletter@parkallen.ca
Website: Marc Pearce	webmaster@parkallen.ca
Newsletter Delivery: Kathy Carter	newsletter@parkallen.ca
Social Media Coordinator: Lindsay Erickson	newsletter@parkallen.ca
Graphics and Layout: Lindsay Erickson	graphics@parkallen.ca
Housing, Planning & Civics: Kristy Fyfe	civics@parkallen.ca
UACC Representative: Edward Hudson	uofa@parkallen.ca

www.parkallen.ca